

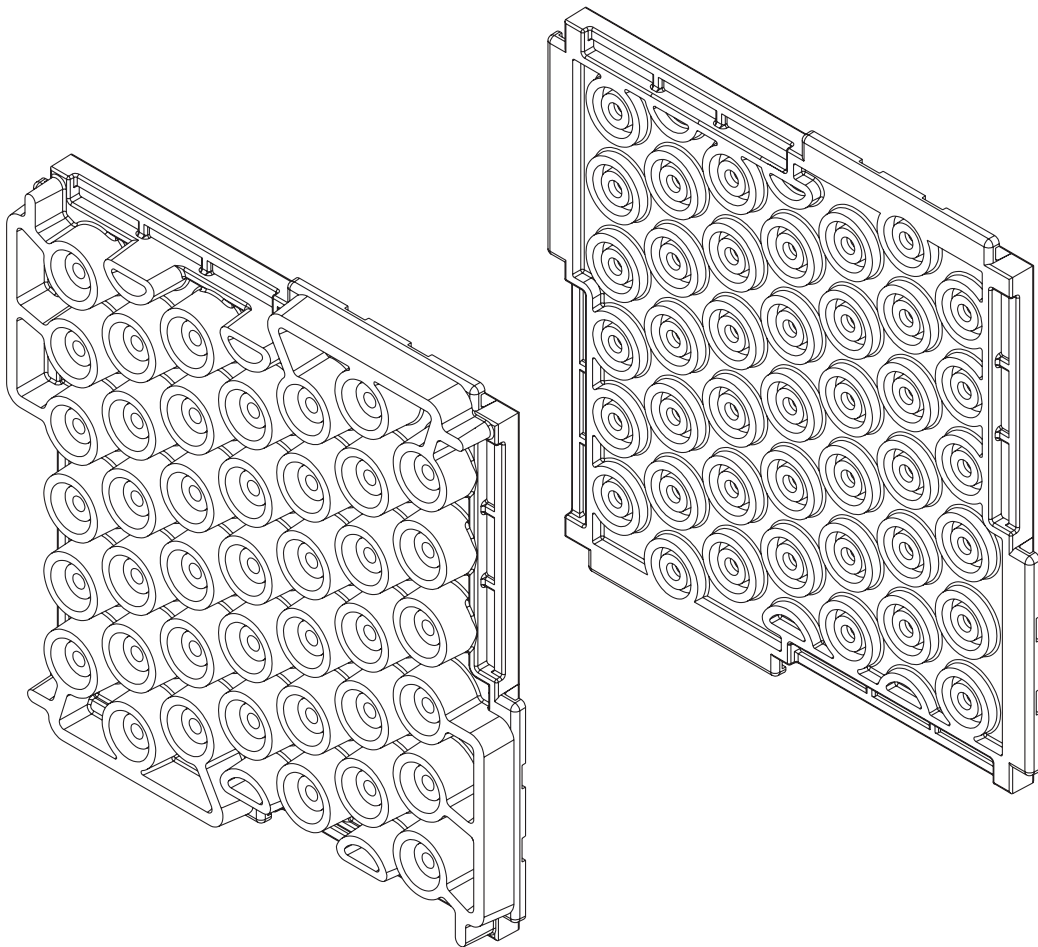


It's not magic, it's engineering.®

Impact and Airborne Sound Control

GENIEMAT[®] FIT

For Weight Drop Impact Insulation



UK EDITION


GENIEMAT[®] FIT

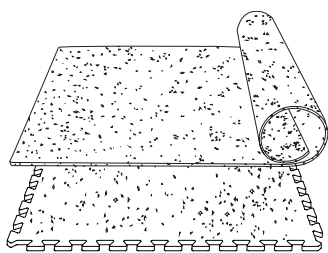
All-in-one fitness flooring

PRODUCT FEATURES

GenieMat FIT is an all-in-one fitness floor made from recycled rubber, engineered to reduce structure-borne sound and vibration transmission in concrete, wood frame and metal deck construction.

GenieMat FIT floors dramatically reduce low frequency impact noise in free weight areas, under cardio equipment and in fitness studios.

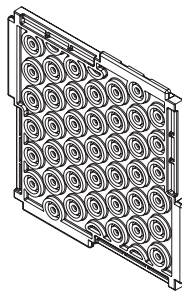
	GenieMat FIT08	GenieMat FIT30	GenieMat FIT70
Area Weight	8.3 kg/m ²	27.8 kg/m ²	41.3 kg/m ²
Nominal Thickness	8 mm	30 mm	70 mm
Installed Dimension	1220 mm x 7620 mm	610 mm x 610 mm	610 mm x 610 mm
Product Type	Roll good/Puzzle Tile	Interlocking Tile	Interlocking Tile



GenieMat® FIT08

APPLICATIONS

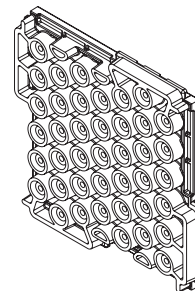
- Entryways/corridors
- Group fitness areas
- Locker rooms
- Spinning studios



GenieMat FIT30

APPLICATIONS

- Cardio studios
- Personal training areas
- Machine areas



GenieMat FIT70

APPLICATIONS

- High impact studios
- Free weight/dumbbell areas
- **GenieMat xFIT70** and **GenieMat xFIT100** recommended for CrossFit® and Olympic style weightlifting activities

ENGINEERED FOR PERFORMANCE

GenieMat® FIT DESIGN CRITERIA

SIGNIFICANTLY REDUCES STRUCTURE-BORNE VIBRATION

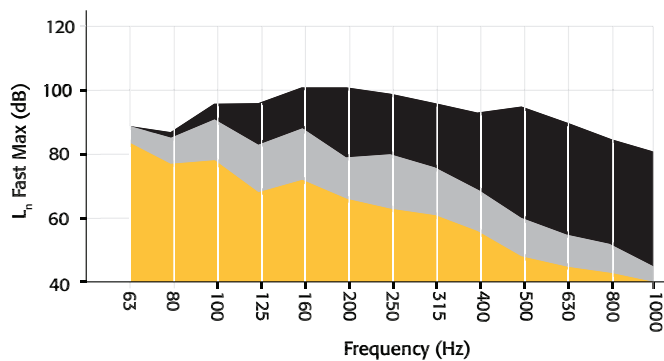
- Low dynamic stiffness for improved low frequency response
- Engineered dual cylinder mounts reduce vibration transmission
- Decreased impact force exposure level as measured using heavy/hard impact sources

SEAMLESS, INTERLOCKING FIT

- Tiles are installed in compression to have a seamless aesthetic and eliminate seam separation over time
- Seam compression of 10.3 N/mm

SOUND PRESSURE MEASUREMENTS

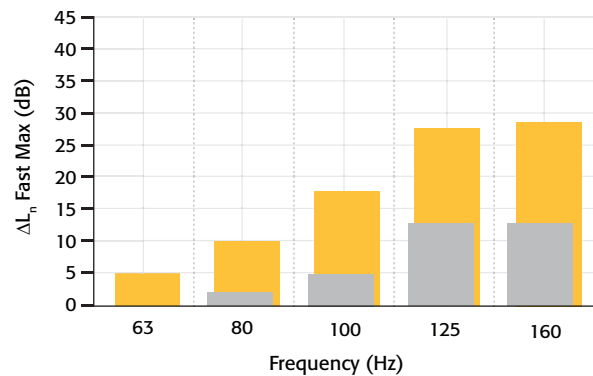
Based on JIS A 1418-2



GenieMat FIT08
 GenieMat FIT30
 GenieMat FIT70

NORMALIZED IMPACT ISOLATION PERFORMANCE FROM GenieMat FIT08

PERFORMANCE FROM **GenieMat FIT08**

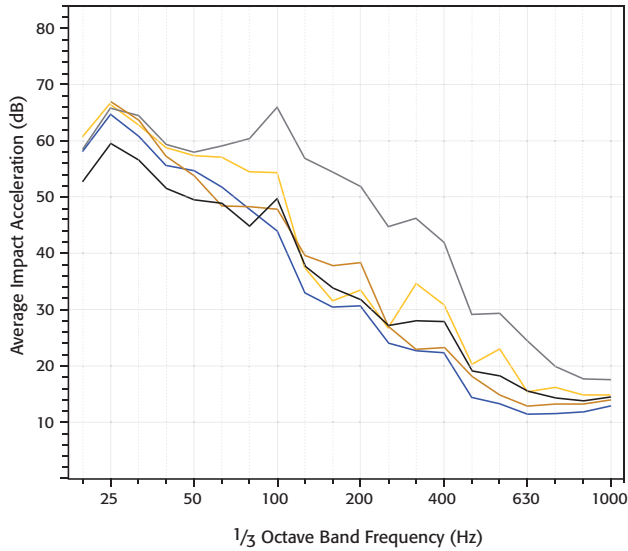


GenieMat FIT30
 GenieMat FIT70

Reduces the transmission of structure-borne vibration by up to 29 dB.

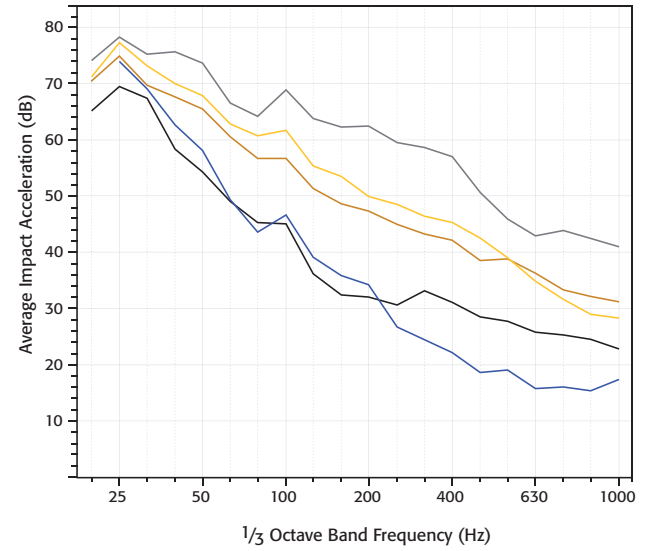
The above graphs depict data using a 7.5 kg spherical impactor dropped from 1m.

STRUCTURE-BORNE VIBRATION MEASUREMENT OF 6.8 KG HARD WEIGHT DROPS ON **GenieMat® FIT** SYSTEMS



- E5600.14 **GenieMat FIT30**
- E5600.15 **GenieMat FIT70**
- E5600.26 **GenieMat FIT70** with
13 mm Cement Board, **GenieMat FF25**
- E5600.29 **GenieMat FIT70** with
19 mm Plywood, **GenieMat FF70**
- E5600.31 **GenieMat FIT70** with
19 mm Plywood, **GenieMat FF70LDM**

STRUCTURE-BORNE VIBRATION MEASUREMENT OF 45.4 KG HARD WEIGHT DROPS ON **GenieMat xFIT** SYSTEMS



- E5600.15 **GenieMat FIT70**
- E5600.16 **GenieMat xFIT70**
- E5600.17 **GenieMat xFIT100**
- E5600.27 **GenieMat xFIT70** with
13 mm Cement Board, **GenieMat FF25**
- E5600.32 **GenieMat xFIT70** with
19 mm Plywood, **GenieMat FF70LDM**

ENGINEERING DESIGN CHARACTERISTICS

TEST RESULTS				
TEST DESCRIPTION	STANDARD REFERENCE	GenieMat® FIT08	GenieMat® FIT30	GenieMat® FIT70
Slip Resistance	ASTM D2047	0.90	0.81	0.81
Tensile Strength	ASTM D412	1.72 N/mm ²	0.74 N/mm ²	0.63 N/mm ²
CHPS Section 01350	ASTM D5116	Pass	Pass	Pass
Chemical Resistance	ASTM F925	No Change	No Change	No Change
Impact Force Exposure Level	ISO 10140 - Part 5	43 dB	41 dB	39 dB

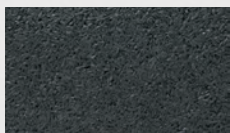


TILE COLOUR SELECTION

GenieMat® FIT30 AND GenieMat FIT70 CLASSIC SERIES

The Classic Series is engineered using 93% recycled materials. Colour offerings are created through a specially formulated pigmentation process with a pigmented urethane matrix. By offering value in the ability to create colourful engineered floors, the Classic Series is ideally suited for high-use environments when solid colours are preferred.

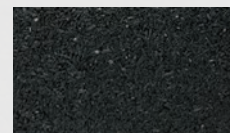
Custom **GenieMat FIT30** and **GenieMat FIT70** tile options are also available with EPDM colours (see page 9). Up to 40% EPDM content will appear directly on the tile; over 40% EPDM content will have a 3 mm wear layer. For details on these custom colour options, please contact **Pliteq** directly.



Grey



Brown



Black



Red



Green



Blue

Product colours may vary.



GENIEMAT® FIT08

GenieMat FIT08 is a protective wear-resistant finished floor used in entryways, corridors, group fitness areas, locker rooms and spinning studios.

GenieMat FIT08 PHYSICAL PROPERTIES

TEST TYPE	ASTM	TEST RESULT
Shore hardness	D2240	60 +/- 5
Density	D729	60 lb/ft ³
Elongation (at break)	D412	85-125%
Tensile strength	D412	250 psi
Taber abrasion	C501	0.45
Critical radiant flux	D395	Class II
Flame spread	E84	135*
Smoke density	E84	<450*
Compression set	D395	12% or less
Coefficient of friction	D1894-95	Wet 1.20 / Dry 1.20
Tear	D624	95 PPI – Die C
Chemical resistance	F925-02	No Change

* Same as carpet and wood

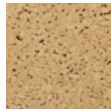
GenieMat® FIT08 COLOURS

EPDM CUSTOM COLOURS

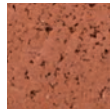
Choose from our selection of 21 colours, then blend them together to create a unique flooring pattern for your project. Product colours may vary.



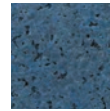
Black Crumb Rubber



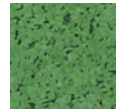
Beige



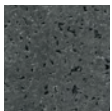
Brick



Denim



Jungle Green



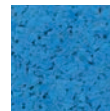
Charcoal



Toffee



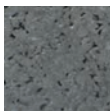
Cardinal Red



Olympic Blue



Teal



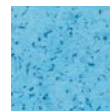
Dark Gray



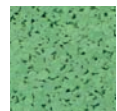
Mustard



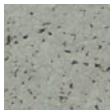
Orange



Sky Blue



Mint



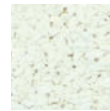
Light Gray



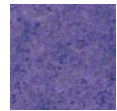
Sand



Yellow



White



Purple

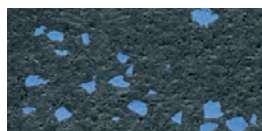


Ash

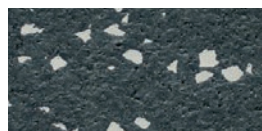
GenieMat FIT08 EXPRESS IS AVAILABLE IN FIVE STOCK COLOURS*:



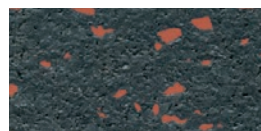
Black



Olympic Blue



Ash



Brick



Beige

*Black ships in 24 - 48 hours. Subject to order quantity.

**Product colours may vary.

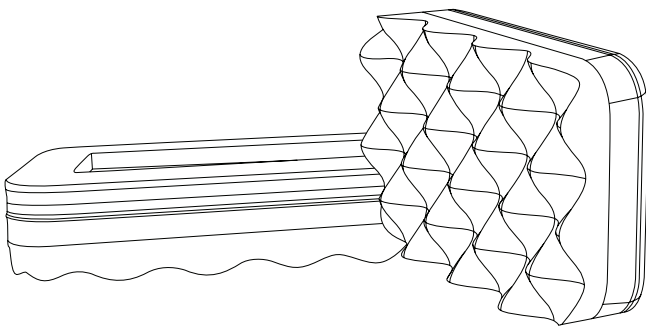
GENIEMAT® TMIP

TREADMILL ISOLATION PADS

U.S Patent No.: 8,113,495
 Canadian Patent No.: 2,505,938

One of the most common complaints made by developers, acoustical consultants and tenants is noise from treadmills. **GenieMat TMIP** are engineered to reduce the transmission of structure-borne vibration resulting from the heavy impact of running.

This patented design utilises an acoustical impedance mismatch resulting in the most effective low frequency impact treadmill isolation system available. The low dynamic stiffness elements of the **GenieMat TMIP** along with steel reinforcing plates provide isolation without sacrificing structural stability.



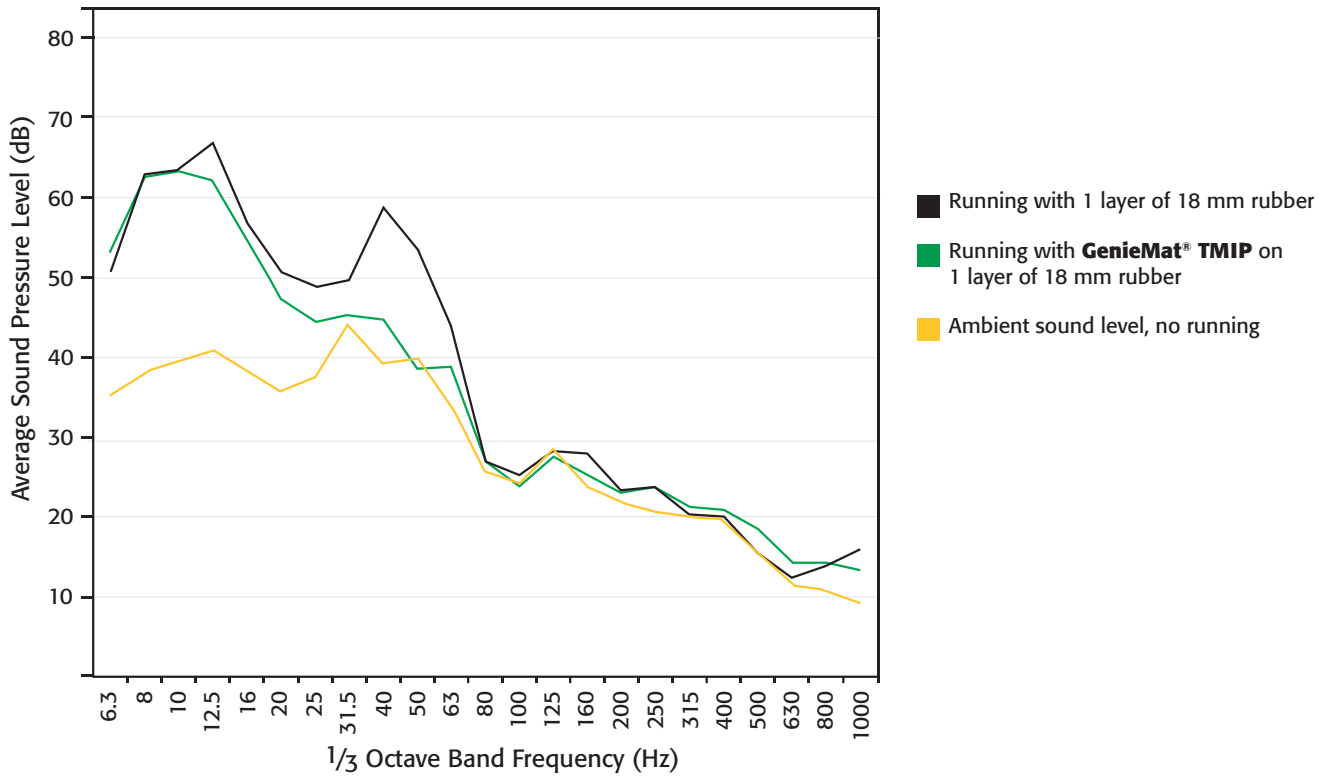
PRODUCT DATA

GenieMat TMIP are inherently non-slip. Custom sizes are available for weight stack isolation and for other special applications.

STANDARD THICKNESS	51 mm
STANDARD SIZES	127 mm x 457 mm – Front Mounts 127 mm x 178 mm – Rear Mounts
STATIC DEFLECTION	Lightweight case: 45 kg user (10.1 kPa load deflection): 1 to 2 cm Heavyweight case: 136 kg user (19.0 kPa load deflection): 2 to 3 cm

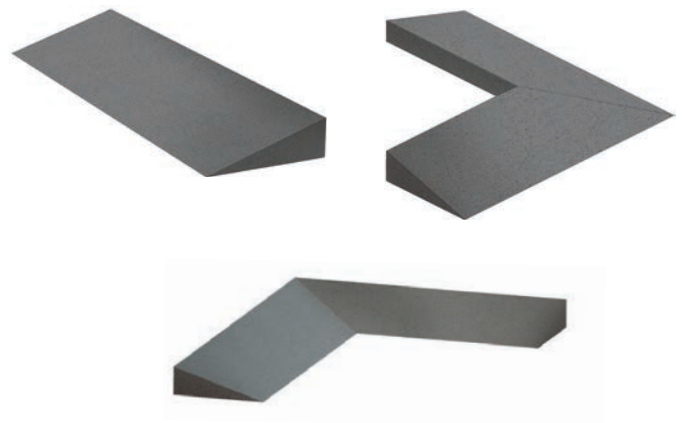
ENGINEERED TO REDUCE LOW FREQUENCY IMPACT

Field Measured Average Sound Pressure Levels



GENIEMAT[®] FIT ACCESSORIES

- Customizable thickness to work with any threshold
- Accessories for all installation types
- Corner transitions created in the field
- **GenieMat FASHM** adhesive
- DDA and Equality Act compliant ramps available



TEST RESULTS

TEST RESULTS				
TEST REPORT NUMBER	FINISH FLOOR	SUBFLOOR SYSTEM*	6.8 kg HARD IMPACT SOURCE (SPL OF COMBINED 63 Hz OCTAVE BAND IN dB)	45.4 kg HARD IMPACT SOURCE (SPL OF COMBINED 63 Hz OCTAVE BAND IN dB)
E5600.11	Bare	None		
E5600.12	GenieMat® FIT08	None		
E5600.14	GenieMat FIT30	None	84	95
E5600.15	GenieMat FIT70	None	81	84
E5600.16	GenieMat xFIT70	None	81	88
E5600.17	GenieMat xFIT100	None	80	80
E5600.26	GenieMat FIT70	12 mm Cement Board, GenieMat FF25	80	76
E5600.27	GenieMat xFIT70	12 mm Cement Board, GenieMat FF25	79	82
E5600.28	GenieMat FIT30	18 mm Plywood, GenieMat FF70	82	86
E5600.29	GenieMat FIT70	18 mm Plywood, GenieMat FF70	80	76
E5600.30	GenieMat xFIT70	18 mm Plywood, GenieMat FF70	78	81
E5600.31	GenieMat FIT70	18 mm Plywood, GenieMat FF70LDM	74	72
E5600.32	GenieMat xFIT70	18 mm Plywood, GenieMat FF70LDM	72	75
E5600.33	Bare	18 mm Plywood on 50 x 100 mm Sleepers, Mason MFS Springs	74	89
E5600.34	GenieMat FIT70	18 mm Plywood on 50 x 100 mm Sleepers, Mason MFS Springs	72	80
E5600.35	GenieMat xFIT70	18 mm Plywood on 50 x 100 mm Sleepers, Mason MFS Springs	69	82

* All assemblies are on 152 mm concrete slab with no ceiling.

CONTACT US

For Your Project Specific Questions

UK +44 1223 257770 | **Asia Pacific** +65 8452 6865 | **Middle East** +971 4 813 5501

E. info@pliteq.co.uk

© Pliteq (UK) LTD. 2019.

®™ Trademarks of Pliteq Inc. The information provided is accurate to the best of our knowledge at the time of issue. However, we reserve the right to make changes when necessary without further notification. Suggested application may need to be modified to conform with local building codes and conditions. We cannot accept responsibility for products that are not used, or installed, to our specifications. All listed dimensions are nominal.



www.pliteq.co.uk